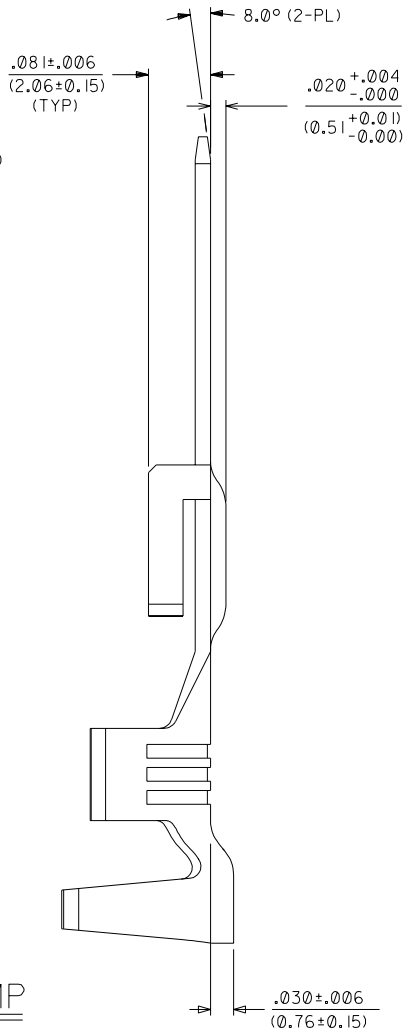
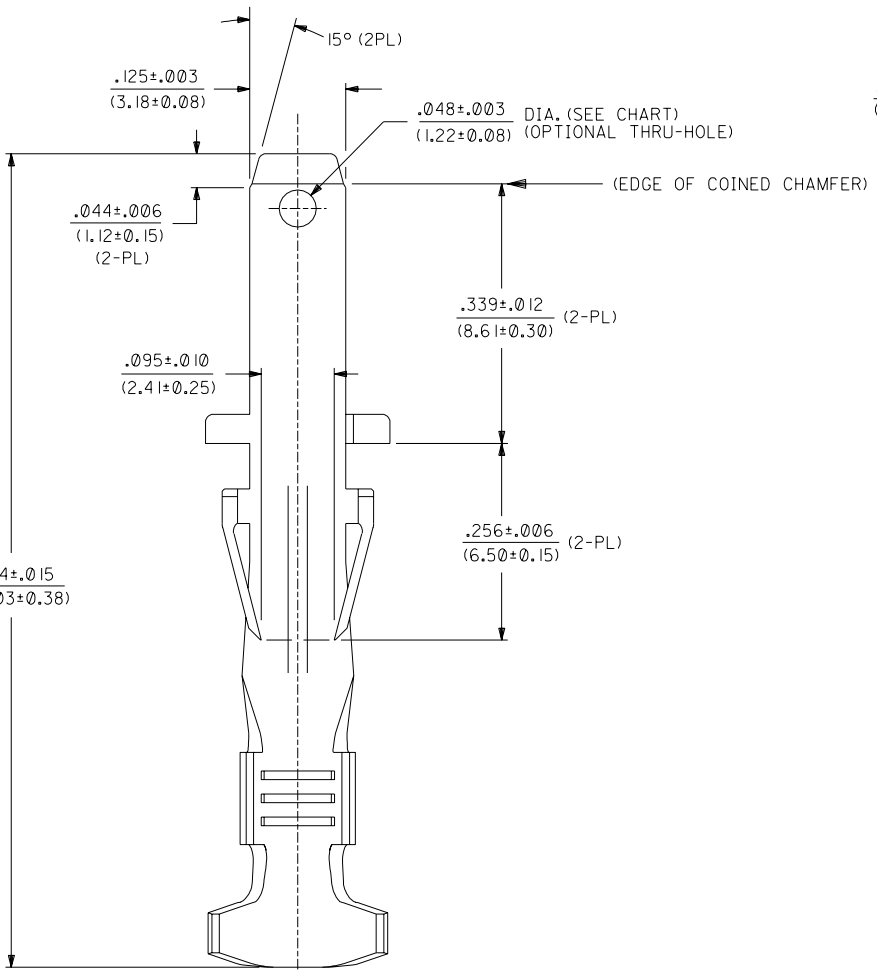
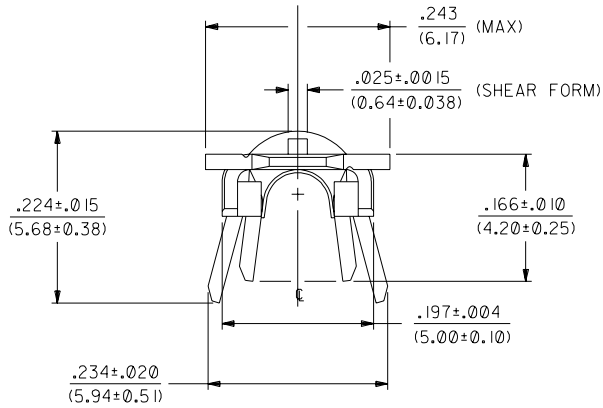


MATERIAL NUMBER	FINISH	HOLE
43178-2001	999	NOT USED
43178-2002	H901	NOT USED
43178-2003	F542	NOT USED

NOTES

- MATERIAL: BRASS
- FINISH:
999 - UNPLATED
H901 - 20 MICROINCH MIN. HOT TIN DIP
F542 - 15 MICROINCH MIN. SELECT GOLD IN CONTACT AREA,
50 MICROINCH TIN-LEAD IN CRIMP AREA,
NICKEL UNDERPLATE OVERALL.
- PRODUCT SPECIFICATION : PSX-44441-9999.
- TERMINAL FOR USE WITH 14-18 AWG, UL 1015 TYPE WIRE.
MAXIMUM INSULATION DIAMETER: .180/(4.57)



LARGE INSULATION CRIMP

43178

C1	REVISED EC*UCR2002-1132 6/27/02 BW
C	UPDATE NOTES UCR 2002-0428 BW 11/01/01
B1	REVISED PER ECN* UCR1999-0893 pelozo 99/06/29
B	REVISED PER UCR1999-0340 98/12/08 LENZ
A3	REVISED PER ECN* UT0921 MARANTO 97/02/07
A2	REVISED PER ECN* UT0225 MARANTO 96/08/28
A1	REVISED PER ECN* U60034 95/07/24 MAB
A	REMOVE *X* PER ECN* U51254 95/06/19 KBP

DIMENSIONS SHOWN (METRIC) INCH UNLESS OTHERWISE SPECIFIED TOLERANCES: ANGULAR ± 1/2°		▽ = 0	▼ = 0	REVISE ONLY ON CAD SYSTEM
3 PLACE ± --- ---	INCH	METRIC	TITLE TERMINAL, CRIMP, MALE TAB .125/(3.18) X .020/(0.51) SABRE - F.B.S. - T.P.A.	
2 PLACE ± --- ± ---	MOLEX INCORPORATED			
1 PLACE --- ± ---	SHEET NO. 1 OF 1 DATE 95/06/19			
DRAFT WHERE APPLICABLE MUST REMAIN WITHIN DIMENSIONS		PART NO. SD-43178-2***		
DRWG. BY: KBP	CHK'D. BY: KBP	FILE NAME: ET43178XG	THIS DRAWING CONTAINS INFORMATION THAT IS PROPRIETARY TO MOLEX INC. AND SHOULD NOT BE USED WITHOUT WRITTEN PERMISSION.	
APP'D. BY: RAS	SCALE: 8:1	DRG. NO. SD-43178-2***	DIV. CO	SIZE